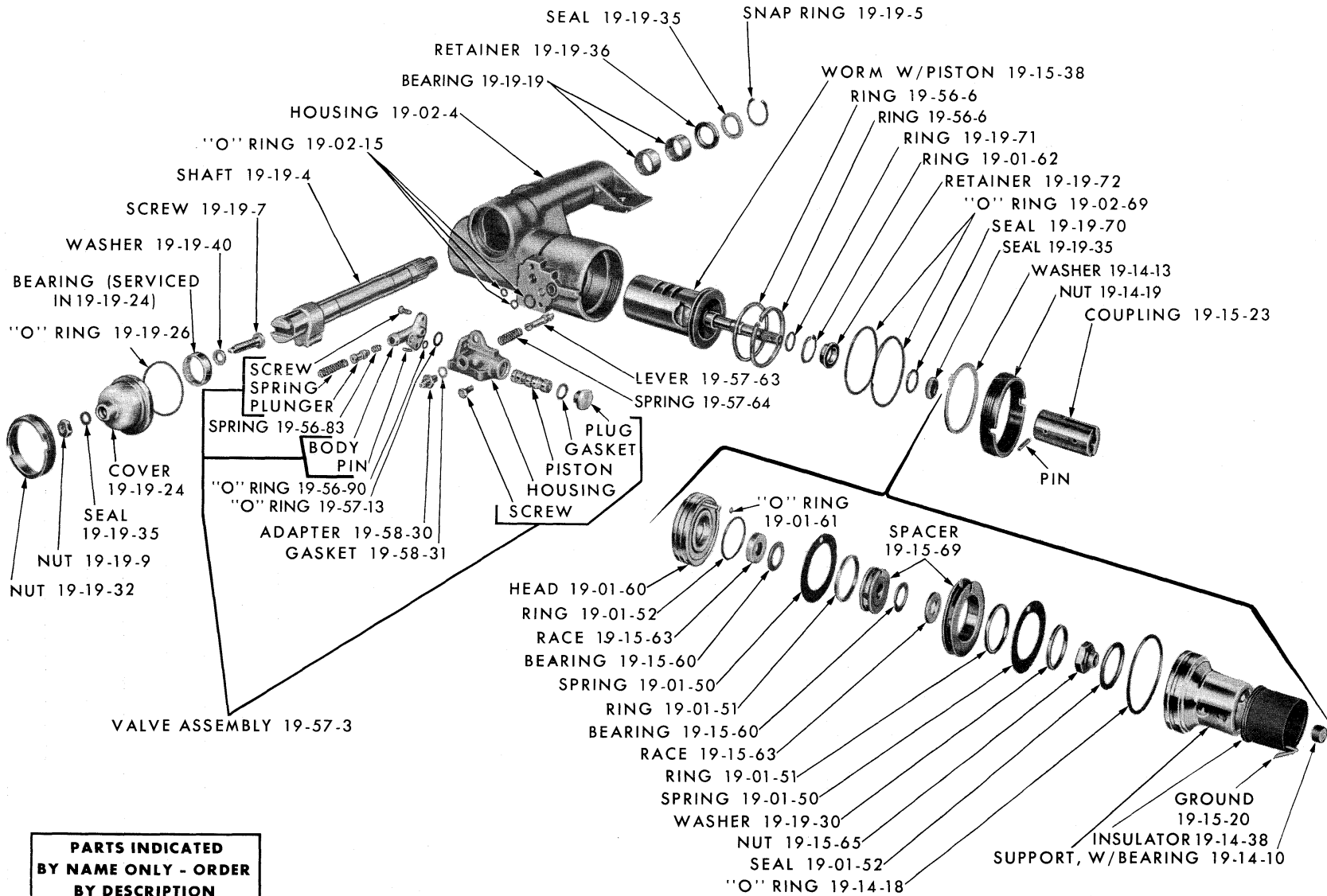


GROUP 19 - STEERING

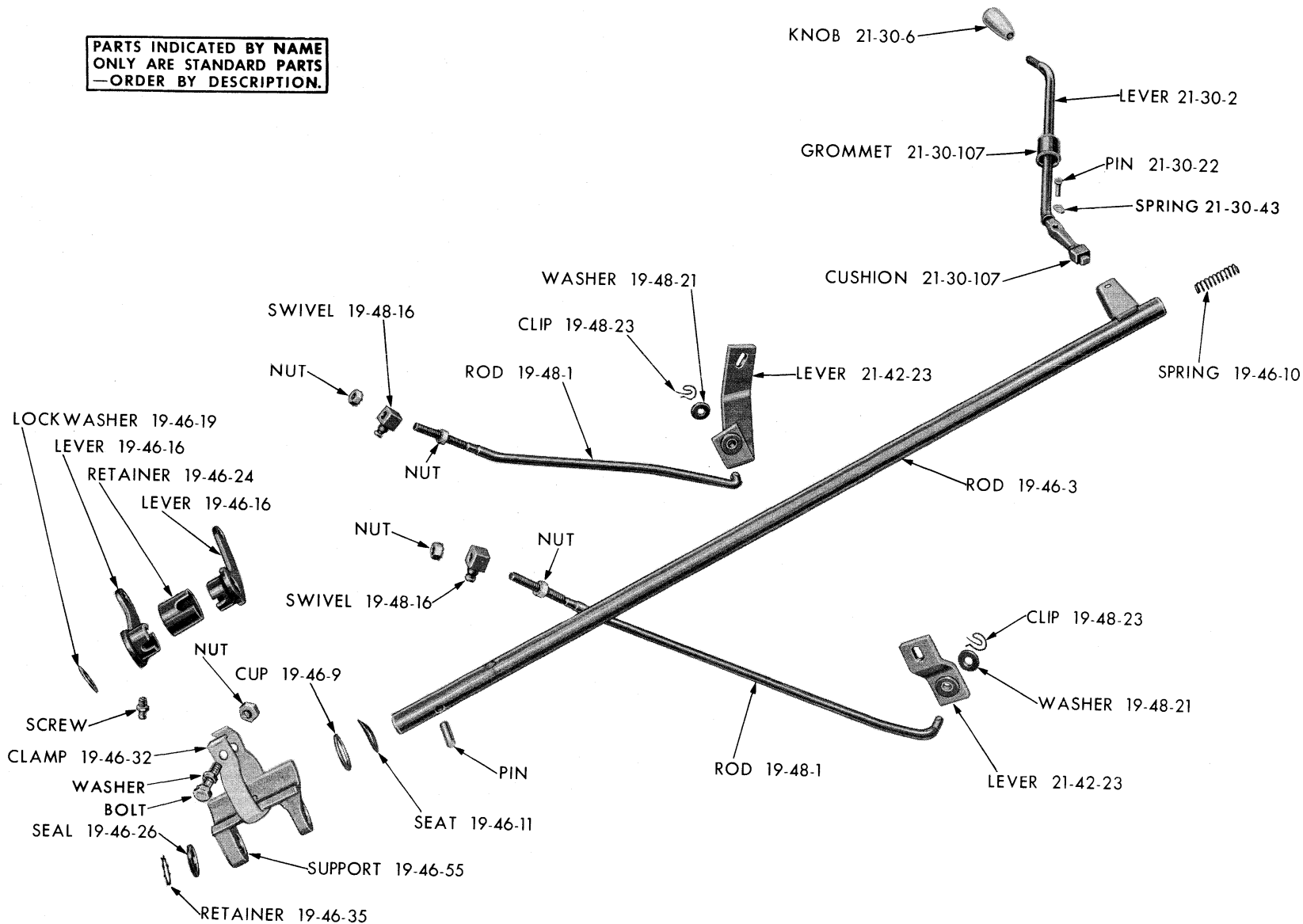


**PARTS INDICATED
BY NAME ONLY - ORDER
BY DESCRIPTION**

19x8420B

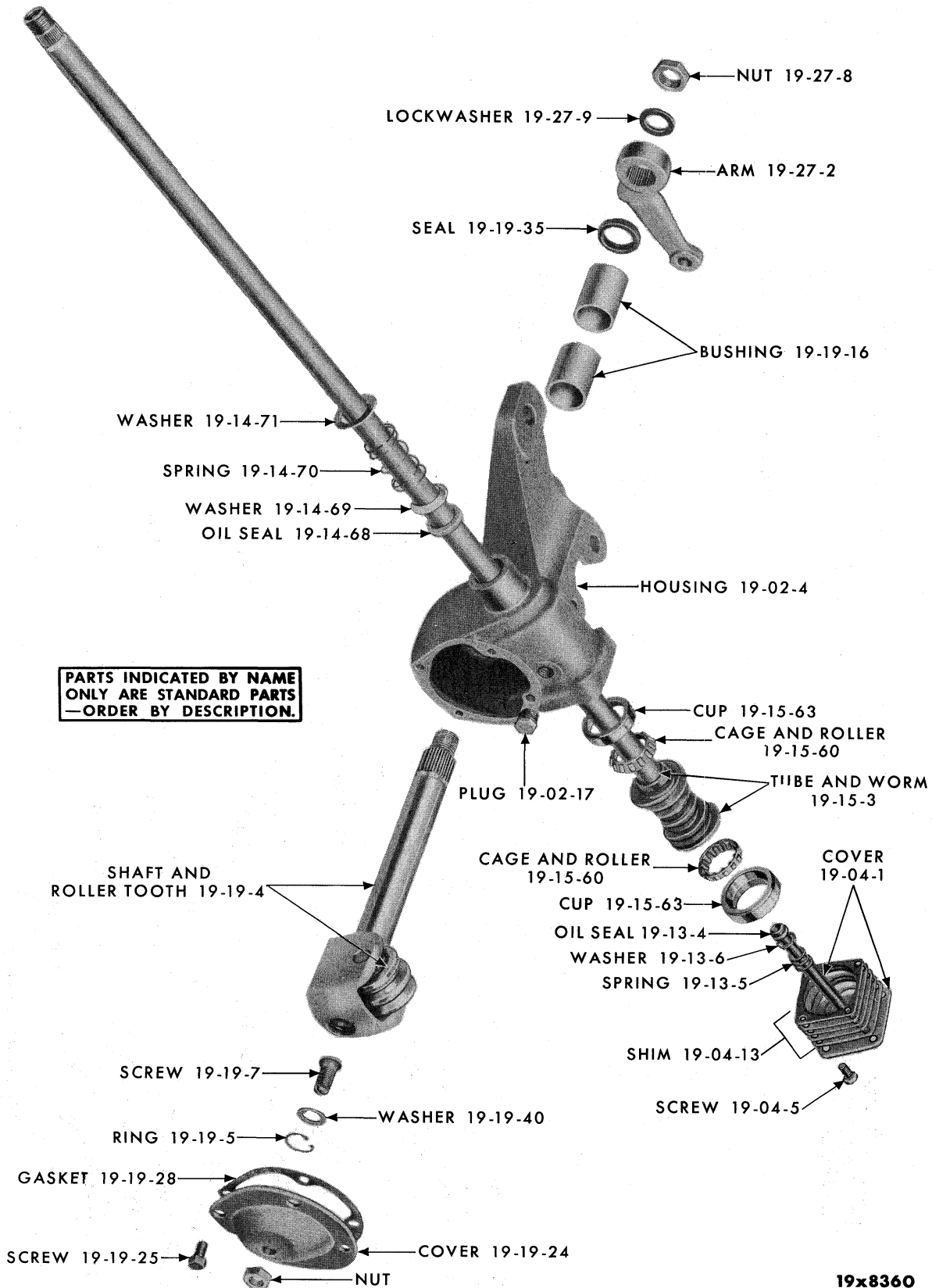
POWER STEERING - CONSTANT CONTROL TYPE

PARTS INDICATED BY NAME
ONLY ARE STANDARD PARTS
—ORDER BY DESCRIPTION.



19x8319A

TRANSMISSION CONTROLS - WITH STANDARD TRANSMISSION



19x8360

MANUAL STEERING GEAR

CODE	PART NAME AND DESCRIPTION	NO. OF CYL.	PLYMOUTH	DODGE	DESOTO	CHRYSLER AND IMPERIAL	PER CAR	PART NUMBER
------	---------------------------	-------------	----------	-------	--------	-----------------------	---------	-------------

GROUP 19 - STEERING

STANDARD STEERING

19-01-0 STEERING GEAR ASSEMBLY								
19-01-3	OVERHAUL PACKAGE	6-8	59	-	-	-	1	1879 737
	MS1, MS2, MC1	6-8	-	59	59	59	1	1879 395
19-01-8	CHUCK	6-8	59	-	-	-	1	1850 526
	MS1, MC1	6-8	-	59	59	59	1	1829 143
	MS2	8	-	-	59	-	1	1829 145
19-01-24	SPACER, Housing to Frame Bolt, MS1, MC1 . .	6-8	59	59	59	59	1	1733 218
19-02-0 STEERING GEAR HOUSING								
19-02-4	HOUSING	6-8	59	-	-	-	1	1850 522
	MS1, MS2, MC1	6-8	-	59	59	59	1	1829 131
19-02-6	PACKAGE, Housing Pivot, MC1	6-8	59	59	59	59	1	2084 336
19-02-17	PLUG, Filler, MS1, MS2, MC1	6-8	59	59	59	59	1	1673 974
19-02-18	WASHER, Housing to Frame Bolt, MS1, MS2, MC1	6-8	59	59	59	59	★	1639 652
19-04-0 STEERING GEAR HOUSING COVER								
19-04-1	COVER, MS1, MS2, MC1	6-8	-	59	59	59	1	1829 568
	w/Grease RETAINER	6-8	59	-	-	-	1	1829 605
19-04-5	SCREW, MS1, MS2, MC1	6-8	59	59	59	59	4	1134 479
19-04-13	SHIM, .003 thk.	6-8	59	-	-	-	★	1142 261
	.025 thk.	6-8	59	-	-	-	★	1311 339
	.003 thk., MS1, MS2, MC1	6-8	-	59	59	59	★	1123 313
	.006 thk., MS1, MS2, MC1	6-8	-	59	59	59	★	620 180
	.011 thk., MS1, MS2, MC1	6-8	-	59	59	59	★	620 181
19-13-0 STEERING GEAR GREASE RETAINING TUBE								
19-13-4	OIL SEAL	6-8	59	-	-	-	1	653 194
	MS1, MS2, MC1	6-8	-	59	59	59	1	1829 134
19-13-5	SPRING, Oil Seal	6-8	59	-	-	-	1	631 456
	MS1, MS2, MC1	6-8	-	59	59	59	1	1829 135
19-13-6	WASHER, Oil Seal	6-8	59	-	-	-	1	631 457
	MS1, MS2, MC1	6-8	-	59	59	59	1	1829 133
19-14-0 STEERING GEAR COLUMN JACKET								
19-14-1	JACKET, w/Std. Trans., MS1	6-8	59	59	59	-	1	1675 747
	w/Auto. Trans., MS1, MC1	6-8	59	59	59	59	1	1731 115
	w/Auto. Trans., MS2	8	-	-	59	-	1	1829 582
	w/Auto. Trans., w/Auto Pilot, MC1	8	-	-	-	59	1	1943 792
19-14-4	BEARING, MS1, MS2, MC1	6-8	59	59	59	59	1	1488 462
19-14-5	SPRING, MS1, MS2, MC1	6-8	59	59	59	59	1	1127 165
19-14-6	WASHER, MC1	6-8	59	59	59	59	2	⊠1828 910
19-14-15	SPACER, Bearing, MS1, MS2, MC1	6-8	59	59	59	59	1	1316 772
19-14-35	CLAMP, MS1, MS2, MC1	6-8	59	59	59	59	1	1142 299
19-14-38	INSULATOR	6-8	59	-	-	-	1	*1685 878
19-14-68	OIL SEAL, MS1, MS2, MC1	6-8	59	59	59	59	1	661 117
19-14-69	WASHER, Oil Seal, MS1, MS2, MC1	6-8	59	59	59	59	1	661 118
19-14-70	SPRING, Oil Seal, MS1, MS2, MC1	6-8	59	59	59	59	1	661 119
19-14-71	WASHER, Oil Seal Spring, MS1, MS2, MC1 . .	6-8	59	59	59	59	1	1311 849
19-15-0 STEERING GEAR TUBE AND WORM								
19-15-3	TUBE, w/WORM	6-8	59	-	-	-	1	1675 733
	MS1, MC1	6-8	-	59	59	59	1	1829 148
	MS2	8	-	-	59	-	1	1829 150

★ Indicates use as required.

Numerals in parentheses () refer to notes.

Printed in U.S.A.

⊠ Indicates parts not listed in any previous parts book.

Prices and specifications subject to change without notice.

* Indicates change or addition.

1959 PASSENGER CAR PARTS LIST

STEERING

CODE	PART NAME AND DESCRIPTION	NO. OF CYL.	PLYMOUTH	DODGE	DESOTO	CHRYSLER AND IMPERIAL	PER CAR	PART NUMBER
STANDARD STEERING								
19-15-0 STEERING GEAR TUBE AND WORM Cont'd								
19-15-12	GROMMET TUBE							
	Insulator, MS1, MS2, MC1	6-8	-	59	59	59	1	1403 226
19-15-60	CAGE and ROLLER, Worm Thrust Bearing.	6-8	59	-	-	-	2	669 077
	MS1, MS2, MC1	6-8	-	59	59	59	2	640 086
19-15-63	CUP, Worm Upper Thrust Bearing	6-8	59	-	-	-	1	618 311
	Lower Thrust Bearing	6-8	59	-	-	-	1	632 685
	Upper Thrust Bearing, MS1, MS2, MC1	6-8	-	59	59	59	1	376 751
	Lower, Thrust Bearing, MS1, MS2, MC1	6-8	-	59	59	59	1	637 539
19-19-0 STEERING GEAR SHAFT AND ROLLER TOOTH ASSEMBLY								
19-19-4	SHAFT, w/Roller Tooth	6-8	59	-	-	-	1	1850 520
	MS1, MS2, MC1	6-8	-	59	59	59	1	1829 126
19-19-5	SNAP RING, Shaft, MS1, MS2, MC1	6-8	59	59	59	59	1	1316 862
19-19-7	SCREW, Shaft Adjusting, MS1, MS2, MC1	6-8	59	59	59	59	1	682 905
19-19-16	BUSHING, Shaft, Upper, MS1, MS2, MC1	6-8	59	59	59	59	1	1673 962
	Lower, MS1, MS2, MC1	6-8	59	59	59	59	1	1615 679
19-19-24	COVER, Shaft	6-8	59	-	-	-	1	1738 203
	MS1, MS2, MC1	6-8	-	59	59	59	1	1829 128
19-19-25	SCREW, Shaft Cover, MS1, MS2, MC1	6-8	59	59	59	59	4	1188 668
19-19-28	GASKET, Shaft Cover	6-8	59	-	-	-	1	1738 204
	MS1, MS2, MC1	6-8	-	59	59	59	1	1738 206
19-19-35	OIL SEAL, Shaft, MS1, MS2, MC1	6-8	59	59	59	59	1	1730 985
19-19-40	WASHER, Shaft Thrust, MS1, MS2, MC1	6-8	59	59	59	59	1	1329 092
19-27-0 STEERING GEAR ARM AND IDLER ARM								
19-27-2	ARM, Gear, MS1, MC1	6-8	59	59	59	59	1	1824 941
	MS2	8	-	-	59	-	1	1824 942
19-27-8	NUT, Arm, MS1, MS2, MC1	6-8	59	59	59	59	1	1392 770
19-27-9	WASHER, Arm Nut Lock, MS1, MS2, MC1	6-8	59	59	59	59	1	52 855
19-27-31	ARM, Idler, MS1, MC1	6-8	59	59	59	59	1	1734 335
	MS2	8	-	-	59	-	1	1734 330
19-27-33	BRACKET, Idler Arm, MS1, MS2, MC1	6-8	59	59	59	59	1	1671 702
19-27-34	BUSHING, Linkage Arm, MS1, MS2, MC1	6-8	59	59	59	59	1	1734 327
19-27-45	BOLT, Linkage Idler Arm, MS1, MS2, MC1	6-8	59	59	59	59	1	1734 326
19-27-50	LINK, Center, MS1, MC1	6-8	59	59	59	59	1	1673 008
	MS2	8	-	-	59	-	1	1672 980
19-27-55	SEAL, Center Link, MS1, MS2, MC1	6-8	59	59	59	59	2	1670 299
19-30-0 STEERING WHEEL								
19-30-4	WHEEL, Rubber, Brown	6-8	59	-	-	-	1	1943 622
	Rubber, Blue	6-8	59	-	-	-	1	1943 623
	Rubber, Gray	6-8	59	-	-	-	1	1943 624
	Rubber, Green	6-8	59	-	-	-	1	1943 625
	Plastic, Clear and Blue	6-8	59	-	-	-	1	1943 616
	Plastic, Clear and Gray	6-8	59	-	-	-	1	1943 617
	Plastic, Clear and Green	6-8	59	-	-	-	1	1943 618
	Plastic, Clear and Black	6-8	59	-	-	-	1	1943 619
	Plastic, Yellow Green	6-8	59	-	-	-	1	1944 007
	Plastic, Clear and Brown	6-8	59	-	-	-	1	1856 325
	Rubber, Blue	8	-	59	-	-	1	1940 500
	Rubber, Green	8	-	59	-	-	1	1940 501
	Rubber, Tan	8	-	59	-	-	1	1940 502
	Rubber, Black	8	-	59	-	-	1	1940 503
	Plastic, Blue	8	-	59	-	-	1	1940 495
	Plastic, Brown and Tan	8	-	59	-	-	1	*1940 497
	Plastic, Green	8	-	59	-	-	1	1940 496

★ Indicates use as required.

Numerals in parentheses () refer to notes.

Printed in U.S.A.

☐ Indicates parts not listed in any previous parts book.

Prices and specifications subject to change without notice.

Feb. 15, 1960 Supersedes Mar. 20, 1959.

* Indicates change or addition.

CODE	PART NAME AND DESCRIPTION	NO. OF CYL.	PLYMOUTH	DODGE	DESOTO	CHRYSLER AND IMPERIAL	PER CAR	PART NUMBER
------	---------------------------	-------------	----------	-------	--------	-----------------------	---------	-------------

STANDARD STEERING

19-30-0 STEERING WHEEL Cont'd								
19-30-4	WHEEL - Cont'd							
	Plastic, White and Black	8	-	59	-	-	1	1940 498
	Plastic, Black and Red	8	-	59	-	-	1	1944 012
	Rubber, Blue, MS1	8	-	-	59	-	1	1943 621
	Rubber, Green, MS1	8	-	-	59	-	1	1856 968
	Rubber, Beige, MS1	8	-	-	59	-	1	1856 969
	Rubber, Black, MS1.	8	-	-	59	-	1	1856 970
	Plastic, Blue, MS1.	8	-	-	59	-	1	1943 632
	Plastic, Green, MS1	8	-	-	59	-	1	1856 974
	Plastic, White and Tan, MS1.	8	-	-	59	-	1	1856 975
	Plastic, White and Black, MS1	8	-	-	59	-	1	1856 976
	Rubber, Blue, MS2	8	-	-	59	-	1	1940 851
	Plastic, White and Blue, w/Auto. Trans., MS2	8	-	-	59	-	1	1944 034
	Plastic, Blue, w/Auto. Trans., MS2	8	-	-	59	-	1	1943 635
	Plastic, Green, w/Auto. Trans., MS2	8	-	-	59	-	1	1856 977
	Plastic, Beige and Tan, w/Auto. Trans., MS2.	8	-	-	59	-	1	1856 978
	Plastic, Silver and Gray, w/Auto. Trans., MS2.	8	-	-	59	-	1	1856 979
	Plastic, White and Gold, w/Auto. Trans., MS2.	8	-	-	59	-	1	1856 980
	Plastic, Blue, MC1	8	-	-	-	59	1	1856 311
	Plastic, Green, MC1	8	-	-	-	59	1	1940 658
	Plastic, Brown and Beige, MC1.	8	-	-	-	59	1	1940 659
	Plastic, Black and Gray, MC1	8	-	-	-	59	1	1940 660
	Plastic, Black and Turquoise, MC1.	8	-	-	-	59	1	1940 661
	Plastic, Ruby, MC1	8	-	-	-	59	1	1940 662
	Plastic, Black and Red, MC1.	8	-	-	-	59	1	1940 663
	Rubber, Black, MC1.	8	-	-	-	59	1	1856 309
	Rubber, Blue, MC1	8	-	-	-	59	1	1940 654
	Rubber, Green, MC1	8	-	-	-	59	1	1940 655
	Rubber, Beige, MC1	8	-	-	-	59	1	1940 656
	Rubber, Ruby, MC1.	8	-	-	-	59	1	1940 657
19-30-6	HUB, MS1	8	-	-	59	-	1	1943 636
	w/Auto. Trans., MS2	8	-	-	59	-	1	1943 627
19-30-18	NUT, Wheel, MS1, MS2, MC1	6-8	59	59	59	59	1	852 414
19-31-0 STEERING COLUMN BRACKET								
19-31-1	BRACKET, w/Auto Trans.	6-8	59	59	-	-	1	1839 984
	w/Std. Trans.	6-8	59	59	-	-	1	1839 979
19-31-7	BRACE, to Cowl Bar, MS1, MS2, MC1	6-8	-	-	59	59	1	1902 050
19-31-19	STUD	6-8	59	59	-	-	2	1901 587
19-31-24	CAP, Bracket, w/Auto. Trans.	6-8	59	59	-	-	1	1839 985
	w/Std. Trans.	6-8	59	59	-	-	1	1839 980
	CLIP, Bracket, MD2, MD3	6-8	59	59	-	-	2	1327 986
	CAP, Bracket, MS1 w/Std. Trans.	8	-	-	59	-	1	1839 299
	CAP, Bracket, MS1, MC1, w/Auto. Trans.	8	-	-	59	59	1	1839 296
	CAP, Bracket MS2	8	-	-	59	-	1	1830 728
19-46-0 GEARSHIFT ROD OR TUBE								
19-46-3	TUBE, w/Std. Trans.	6-8	59	-	-	-	1	1940 522
	MS1	6-8	-	59	59	-	1	1856 986
19-46-9	CUP, Tube Lever Spring Washer, w/Std. Trans., MS1	6-8	59	59	59	-	1	1673 948

CODE	PART NAME AND DESCRIPTION	NO. OF CYL.	PLYMOUTH	DODGE	DESOTO	CHRYSLER AND IMPERIAL	PER CAR	PART NUMBER
------	---------------------------	-------------	----------	-------	--------	-----------------------	---------	-------------

POWER STEERING

19-01-0 STEERING GEAR ASSEMBLY

19-01-4	"O" RING and SEAL PACKAGE	6-8	59	59	59	59	1	*1881 715
19-01-8	CHUCK, MC1, MC2, MC3	6-8	59	59	59	59	1	1733 763
	MY1	8	-	-	-	59	1	*2122 032
19-01-50	SPRING, Reaction, UP TO	6-8	59	59	59	59 (1)	2	1822 134
	MY1, AFTER	8	-	-	-	59 (1)	2	1822 953
19-01-51	RING, Reaction, UP TO	6-8	59	59	59	59 (1)	2	1822 150
	MY1, AFTER	8	-	-	-	59 (1)	2	1733 791
19-01-52	"O" RING, Reaction, Upper, UP TO	6-8	59	59	59	59 (1)	1	1822 151
	Upper, MY1, AFTER	8	-	-	-	59 (1)	1	1733 593
	Lower, UP TO	6-8	59	59	59	59 (1)	1	1822 149
	Lower, MY1, AFTER	8	-	-	-	59 (1)	1	*1823 091
19-01-60	HEAD, Cylinder, UP TO	6-8	59	59	59	59 (1)	1	1945 808
	MY1, AFTER	8	-	-	-	59 (1)	1	2122 034
19-01-61	"O" RING, Cylinder Head Ferrule	6-8	59	59	59	59	1	1486 205
19-01-62	SNAP RING, Cylinder Head	6-8	59	59	59	59	1	1822 321

19-02-0 STEERING GEAR HOUSING

19-02-4	HOUSING (also specify 1-1822 871 Spring)	6-8	59	59	59	59	1	⊠2122 041
19-02-15	"O" RING, Housing	6-8	59	59	59	59	1	1316 849
	"O" RING, Housing Port	6-8	59	59	59	59	2	1556 385
19-02-18	WASHER, Housing to Frame Bolt	6-8	59	59	59	59	★	1639 652
19-02-20	SPACER, Housing to Frame	6-8	59	59	59	59	5	1671 586
19-02-21	WEDGE, Housing to Frame	6-8	59	59	59	59	1	1671 587
19-02-69	"O" RING, Cylinder Head	6-8	59	59	59	59	2	1733 562

19-14-0 STEERING GEAR COLUMN JACKET

19-14-1	JACKET, w/Std. Trans.	8	59	-	-	-	1	*1850 548
	w/Auto. Trans., MS1, MC1	6-8	59	59	59	59	1	1850 543
	w/Auto. Trans., MS2, MS3, MC2, MC3	8	-	-	59	59	1	1850 544
	w/Auto. Trans., w/Auto. Pilot, MC1	8	-	-	-	59	1	1943 789
	w/Auto. Trans., w/Auto. Pilot, MC2, MC3	8	-	-	-	59	1	1943 790
	w/Auto. Trans., MY1	8	-	-	-	59	1	1944 006
19-14-4	BEARING	6-8	59	59	59	59	2	⊠1828 911
19-14-6	WASHER	6-8	59	59	59	59	2	⊠1828 910
19-14-7	PACKAGE, Bearing and Tube	6-8	59	59	59	59	1	1879 708
19-14-10	SUPPORT and INSULATOR PACKAGE, UP TO	6-8	59	59	59	59 (1)	1	1879 713
	SUPPORT, MY1, AFTER	8	-	-	-	59 (1)	1	2122 035
19-14-13	WASHER, Support Nut	6-8	59	59	59	59	1	1733 588
19-14-18	"O" RING, Support	6-8	59	59	59	59	1	1733 602
19-14-19	NUT, Support	6-8	59	59	59	59	1	1733 625
19-14-35	CLAMP	6-8	59	59	59	59	1	1820 385
	w/BUSHING, w/Std. Trans.	8	59	-	-	-	1	*1820 598
19-14-38	INSULATOR	6-8	59	59	59	59	1	1850 547

19-15-0 STEERING GEAR TUBE AND WORM

19-15-2	BALL PACKAGE, Worm Connector	6-8	59	59	59	59	1	1450 995
19-15-4	TUBE, MY1	8	-	-	-	59	1	1944 005
19-15-5	TUBE PACKAGE, MS1, MC1	6-8	59	59	59	59	1	1879 716
	MS2, MS3, MC2, MC3	8	-	-	59	59	1	1879 715
19-15-6	STOP, Tube	6-8	59	59	59	59	1	1829 594
19-15-10	INSULATOR, Tube	6-8	59	59	59	59	1	1822 668
19-15-11	INSERT, Tube Insulator	6-8	59	59	59	59	2	1822 667
19-15-15	SNAP RING, Tube	6-8	59	59	59	59	1	1944 011
19-15-20	HORN GROUND, Tube	6-8	59	59	59	59	1	1856 336
19-15-23	COUPLING, Worm	6-8	59	59	59	59	1	1850 524
19-15-38	WORM, w/PISTON	6-8	59	59	59	59	1	1822 736
19-15-39	SPRING PACKAGE, Ball Guide, MS3,	8	-	-	59	59	1	2084 215
	MC2, MC3, MY1	6-8	59	59	59	59	2	1822 158
19-15-60	BEARING, Thrust	6-8	59	59	59	59	1	1733 594
	BEARING, Worm	6-8	59	59	59	59	1	1856 292
19-15-63	RACE, Thrust Bearing, Inner	6-8	59	59	59	59	1	1822 156
	Outer	6-8	59	59	59	59	1	1822 156

NOTE 1: MC1, MC2, MC3, All, No.1 Job. MY1-L Ser. No. 617-104022.
 MY1-M Ser. No. 637-104779. MY1-H Ser. No. 657-100718.

1959 PASSENGER CAR PARTS LIST

STEERING

CODE	PART NAME AND DESCRIPTION	NO. OF CYL.	PLYMOUTH	DODGE	DESOTO	CHRYSLER AND IMPERIAL	PER CAR	PART NUMBER
------	---------------------------	-------------	----------	-------	--------	-----------------------	---------	-------------

POWER STEERING

19-15-0 STEERING GEAR TUBE AND WORM **Cont'd**

19-15-65	NUT, Thrust Bearing	6-8	59	59	59	59	1	1822 157
19-15-69	SPACER, w/Center Race	6-8	59	59	59	59	1	1822 390

19-19-0 STEERING GEAR SHAFT AND ROLLER TOOTH ASSEMBLY

19-19-4	SHAFT	6-8	59	59	59	59	1	1733 577
19-19-5	SNAP RING, Shaft Oil Seal	6-8	59	59	59	59	1	1670 357
19-19-7	SCREW, Adjusting	6-8	59	59	59	59	1	*1675 269
19-19-9	NUT, Adjusting Screw	6-8	59	59	59	59	1	1822 204
19-19-19	BEARING, Housing Shaft	6-8	59	59	59	59	2	1734 078
19-19-24	COVER, Shaft, w/BEARING	6-8	59	59	59	59	1	1733 604
19-19-26	"O" RING, Shaft Cover	6-8	59	59	59	59	1	1733 615
19-19-30	WASHER, Reaction Seal, Upper	6-8	59	59	59	59	1	1733 790
19-19-32	NUT, Shaft Cover	6-8	59	59	59	59	1	1733 627
19-19-35	OIL SEAL, Shaft	6-8	59	59	59	59	1	1730 985
	SEAL, Adjusting Screw	6-8	59	59	59	59	1	1822 203
	OIL SEAL, Worm Shaft, Upper	6-8	59	59	59	59	1	1733 603
19-19-36	RETAINER, Oil Seal	6-8	59	59	59	59	1	1670 356
19-19-40	WASHER, Adjusting Screw Thrust	6-8	59	59	59	59	1	1675 271
19-19-70	SEAL, Worm Sleeve	6-8	59	59	59	59	1	1822 324
19-19-71	RING, Worm Sealing, Metal	6-8	59	59	59	59	1	1822 329
	Plastic	6-8	59	59	59	59	1	1822 406
19-19-72	SLEEVE, Worm	6-8	59	59	59	59	1	1822 320

19-27-0 STEERING GEAR ARM AND IDLER ARM

19-27-2	ARM, Gear, MS1, MC1	6-8	59	59	59	59	1	1731 414
	MS2, MS3, MC2, MC3, MY1	8	-	-	59	59	1	1731 415
19-27-8	NUT, Arm	6-8	59	59	59	59	1	1392 770
19-27-9	WASHER, Arm Nut Lock	6-8	59	59	59	59	1	52 855
19-27-31	ARM, Idler, MS1, MC1	6-8	59	59	59	59	1	1734 335
	MS2, MS3, MC2, MC3, MY1	8	-	-	59	59	1	1734 330
19-27-33	BRACKET, Idler Arm	6-8	59	59	59	59	1	1671 702
19-27-34	BUSHING, Linkage Arm	6-8	59	59	59	59	1	1734 327
19-27-45	BOLT, Linkage Idler Arm	6-8	59	59	59	59	1	1734 326
19-27-50	LINK, Center, MS1, MC1	6-8	59	59	59	59	1	1673 008
	MS2, MS3, MC2, MC3, MY1	8	-	-	59	59	1	1672 980
19-27-55	SEAL, Center Link	6-8	59	59	59	59	2	1670 299

19-30-0 STEERING WHEEL

19-30-4	WHEEL, Rubber, Brown	6-8	59	-	-	-	1	1943 622
	Rubber, Blue	6-8	59	-	-	-	1	1943 623
	Rubber, Gray	6-8	59	-	-	-	1	1943 624
	Rubber, Green	6-8	59	-	-	-	1	1943 625
	Plastic, Clear and Blue	6-8	59	-	-	-	1	1943 616
	Plastic, Clear and Gray	6-8	59	-	-	-	1	1943 617
	Plastic, Clear and Green	6-8	59	-	-	-	1	1943 618
	Plastic, Clear and Black	6-8	59	-	-	-	1	1943 619
	Plastic, Yellow Green	6-8	59	-	-	-	1	1944 007
	Plastic, Clear and Brown	6-8	59	-	-	-	1	1856 325
	Rubber, Blue	8	-	59	-	-	1	1940 500
	Rubber, Green	8	-	59	-	-	1	1940 501
	Rubber, Tan	8	-	59	-	-	1	1940 502
	Rubber, Black	8	-	59	-	-	1	1940 503
	Plastic, Blue	8	-	59	-	-	1	1940 495
	Plastic, Brown and Tan	8	-	59	-	-	1	*1940 497
	Plastic, Green	8	-	59	-	-	1	1940 496
	Plastic, White and Black	8	-	59	-	-	1	1940 498
	Plastic, Black and Red	8	-	59	-	-	1	1944 012
	Rubber, Blue, MS1	8	-	-	59	-	1	1943 621
	Rubber, Green, MS1	8	-	-	59	-	1	1856 968
	Rubber, Beige, MS1	8	-	-	59	-	1	1856 969
	Rubber, Black, MS1	8	-	-	59	-	1	1856 970
	Plastic, Blue, MS1	8	-	-	59	-	1	1943 632

* Indicates use as required.

Numerals in parentheses () refer to notes.

Printed in U.S.A.

☐ Indicates parts not listed in any previous parts book.

Prices and specifications subject to change without notice.

Feb. 15, 1960 Supersedes May 25, 1959.

* Indicates change or addition.

CODE	PART NAME AND DESCRIPTION	NO. OF CYL.	PLYMOUTH	DODGE	DESOTO	CHRYSLER AND IMPERIAL	PER CAR	PART NUMBER
------	---------------------------	-------------	----------	-------	--------	-----------------------	---------	-------------

POWER STEERING

19-30-0 STEERING WHEEL Cont'd								
19-30-4	WHEEL - Cont'd							
	Plastic, Green, MS1	8	-	-	59	-	1	1856 974
	Plastic, White and Tan, MS1	8	-	-	59	-	1	1856 975
	Plastic, White and Black, MS1	8	-	-	59	-	1	1856 976
	Plastic, White and Blue, w/Auto. Trans., MS2, MS3	8	-	-	59	-	1	1944 034
	Plastic, Blue, w/Auto. Trans., MS2, MS3	8	-	-	59	-	1	1943 635
	Plastic, Green, w/Auto. Trans., MS2, MS3	8	-	-	59	-	1	1856 977
	Plastic, Beige and Tan, w/Auto. Trans., MS2, MS3	8	-	-	59	-	1	1856 978
	Plastic, Silver and Gray, w/Auto. Trans., MS2, MS3	8	-	-	59	-	1	1856 979
	Plastic, White and Gold, w/Auto. Trans., MS2, MS3	8	-	-	59	-	1	1856 980
	Rubber, Blue, MS2	8	-	-	59	-	1	1940 851
	Plastic, Blue, MC1	8	-	-	-	59	1	E1856 311
	Plastic, Green, MC1	8	-	-	-	59	1	1940 658
	Plastic, Brown and Beige, MC1	8	-	-	-	59	1	1940 659
	Plastic, Black and Gray, MC1	8	-	-	-	59	1	1940 660
	Plastic, Black and Turquoise, MC1	8	-	-	-	59	1	1940 661
	Plastic, Ruby, MC1	8	-	-	-	59	1	1940 662
	Plastic, Black and Red, MC1	8	-	-	-	59	1	1940 663
	Rubber, Black, MC1	8	-	-	-	59	1	E1856 309
	Rubber, Blue, MC1	8	-	-	-	59	1	1940 654
	Rubber, Green, MC1	8	-	-	-	59	1	1940 655
	Rubber, Beige, MC1	8	-	-	-	59	1	1940 656
	Rubber, Ruby, MC1	8	-	-	-	59	1	1940 657
	Plastic, Blue, MC2, MC3	8	-	-	-	59	1	E1856 305
	Plastic, Green, MC2, MC3	8	-	-	-	59	1	1940 664
	Plastic, Brown and Beige, MC2, MC3	8	-	-	-	59	1	1940 665
	Plastic, Black and Gray, MC2, MC3	8	-	-	-	59	1	1940 666
	Plastic, Black and Turquoise, MC2, MC3	8	-	-	-	59	1	1940 667
	Plastic, Ruby, MC2, MC3	8	-	-	-	59	1	1940 668
	Plastic, Black and Red, MC2, MC3	8	-	-	-	59	1	1940 669
	Plastic, Blue, w/Cushioned Horn Rings, MC2, MC3	8	-	-	-	59	1	1944 040
	Plastic, Green, w/Cushioned Horn Rings, MC2, MC3	8	-	-	-	59	1	1944 041
	Plastic, Black and Gray, w/Cushioned Horn Rings, MC2, MC3	8	-	-	-	59	1	1944 043
	Plastic, Brown and Beige, w/Cushioned Horn Rings, MC2, MC3	8	-	-	-	59	1	1944 042
	Plastic, Black and Turquoise, w/Cushioned Horn Rings, MC2, MC3	8	-	-	-	59	1	1944 044
	Plastic, Ruby, w/Cushioned Horn Rings, MC2, MC3	8	-	-	-	59	1	1944 045
	Plastic, Black and Red, w/Cushioned Horn Rings, MC2, MC3	8	-	-	-	59	1	1944 046
	Plastic, Black and Beige, MC3-300	8	-	-	-	59	1	E1940 670
	Plastic, Blue, MY1	8	-	-	-	59	1	1856 316
	Plastic, Green, MY1	8	-	-	-	59	1	1940 671
	Plastic, Brown and Beige, MY1	8	-	-	-	59	1	1940 672
	Plastic, Black and Gray, MY1	8	-	-	-	59	1	1940 673
	Plastic, Black and Turquoise, MY1	8	-	-	-	59	1	1940 674
	Plastic, Ruby, MY1	8	-	-	-	59	1	1940 675
	Plastic, Black and Red, MY1	8	-	-	-	59	1	1940 847
	Plastic, Black and White Pearl, MY1	8	-	-	-	59	1	1940 848

★ Indicates use as required. Numerals in parentheses () refer to notes. Printed in U.S.A.
 □ Indicates parts not listed in any previous parts book. Prices and specifications subject to change without notice.
 * Indicates change or addition. Page 19-7 March 20, 1959 Supersedes Dec. 30, 1958.

1959 PASSENGER CAR PARTS LIST

STEERING

CODE	PART NAME AND DESCRIPTION	NO. OF CYL.	PLYMOUTH	DODGE	DESOTO	CHRYSLER AND IMPERIAL	PER CAR	PART NUMBER
------	---------------------------	-------------	----------	-------	--------	-----------------------	---------	-------------

POWER STEERING

19-30-0 STEERING WHEEL Cont'd

19-30-6	HUB, MS1	8	-	-	59	-	1	1943 636
	w/Auto. Trans., MS2, MS3	8	-	-	59	-	1	1943 627
19-30-18	NUT, Wheel	6-8	59	59	59	59	1	852 414

19-31-0 STEERING COLUMN BRACKET

19-31-1	BRACKET, w/Auto. Trans.	6-8	59	59	-	-	1	1839 984
	w/Std. Trans.	8	59	59	-	-	1	*1839 979
19-31-7	BRACE, to Cowl Bar, MC1, MC2, MC3	8	-	-	59	59	1	1902 050
	To Windshield Frame Lower, MY1	8	-	-	-	59	1	1830 746
	Upper, MY1	8	-	-	-	59	1	1839 327
19-31-19	STUD	6-8	59	59	-	-	2	1901 587
19-31-24	CAP, Bracket, w/Auto. Trans.	6-8	59	59	-	-	1	1839 985
	w/Std. Trans.	8	59	59	-	-	1	*1839 980
	CLIP, Bracket	6-8	59	-	-	-	2	1327 986
	CAP, Bracket, MS1, MC1	8	-	-	59	59	1	1839 296
	CAP, Bracket, MS2, MS3, MC2, MC3	8	-	-	59	59	1	1830 728

19-48-0 GEARSHIFT CONTROL RODS

19-48-1	ROD, w/Std. Trans., 2nd and High.	8	59	-	-	-	1	*1829 646
	w/Std. Trans., First and Reverse	8	59	-	-	-	1	*1829 647
	w/Std. Trans., 2nd and High, MD3	8	-	59	-	-	1	1829 669
	w/Std. Trans., First and Reverse, MD3	8	-	59	-	-	1	1829 670

19-54-0 POWER STEERING OIL PUMP

NOTE: Pumps 1827 819, 1827 977, 1859 938 and 1851 740 are no longer available for service for they have been superseded by 1947 710 Pump. For Components of these Pumps refer to Chart.

19-54-1	PUMP MOUNTING ADAPTATION PACKAGE, MY1	8	-	-	-	59	1	⊠1881 818
19-54-2	PUMP, Type 1	6	59	59	-	-	1	1851 584
	Type 1	8	59	59	59	59	1	*1947 710

NOTE: Type 1 indicates Pump with Pressed on Pulley.

NOTES

POWER STEERING

19-54-0 POWER STEERING OIL PUMP Cont'd

POWER STEERING OIL PUMP COMPONENT PARTS

PUMP ASSEMBLIES

CODE	PART NAME	1851 584	1827 977	1827 819	1851 740	1859 938	1947 710
------	-----------	----------	----------	----------	----------	----------	----------

NOTE: Quantity (1) per vehicle unless otherwise indicated.

19-54-29	OIL SEAL, Pump Shaft	1734 913	1734 913	1734 913	1734 913	1734 913	1734 913
19-54-32	SPRING, Flow Control Valve	1732 953	1732 953	1732 953	1732 953	1732 953	1732 953
19-54-60	FILTER, Pump	-----	-----	1851 957	1851 957	1851 957	1851 957
19-54-86	PULLEY, Pump, MD2	1851 460	1733 488	1826 056	1851 732	1826 056	1826 056
	PULLEY, Pump, w/Car Cooling, MP2	-----	-----	-----	-----	1733 488	-----
	PULLEY, Pump, w/o Car Cooling, MP2	-----	1733 488	-----	-----	-----	-----
19-54-90	BELT, Pump, see Chart Part Type Code 7-03-1	-----	-----	-----	-----	-----	-----
19-54-91	STRAP, Pump Adjusting	1851 464	-----	-----	-----	-----	-----
19-54-95	SUPPORT, Pump	1851 461	-----	-----	-----	-----	-----
19-54-115	BRACKET, Pump	1855 186	-----	-----	-----	-----	-----
	BRACKET, Pump, Front	-----	1733 487	1826 058	1826 058	1826 058	1826 058
	BRACKET, Pump, Rear	-----	1851 314	1826 057	1826 057	1826 057	1826 057
19-54-119	WASHER, Pump Adjusting Screw Lock	6013 067	6013 067	6013 067	6013 067	6013 067	6013 067
19-54-128	PACKAGE, Flow Control Valve Plug and Snap Ring	1879 353	1879 353	1879 353	1879 353	1879 353	1879 353
19-54-180	RESERVOIR	1738 647	1738 647	1738 647	1738 647	1738 647	1738 647
19-54-181	SEAL, Pump Oil Reservoir	1732 946	1732 946	1732 946	1732 946	1732 846	1732 946
	SEAL, Pump Oil Reservoir Mounting	1738 662	1738 662	1738 662	1738 662	1738 662	1738 662
19-54-182	CAP, Reservoir Filter Neck	1945 461	1945 461	1945 461	1945 461	1945 461	1945 461
19-54-183	GASKET, Reservoir Filler Neck Cap	1732 924	1732 924	1732 924	1732 924	1732 924	1732 924
19-54-188	SEAT, Pump Outlet Fitting Ball	1738 683	1738 683	1738 683	1738 683	1738 683	1738 683
19-54-246	BODY, Pressure Relief Valve	1852 855	1852 855	1852 855	1852 855	1859 940	1859 940
19-54-248	GASKET, Pressure Relief Valve Body	1852 920	1852 920	1852 920	1852 920	1852 920	1852 920

CODE	PART NAME AND DESCRIPTION	NO. OF CYL.	PLYMOUTH	DODGE	DESOTO	CHRYSLER AND IMPERIAL	PER CAR	PART NUMBER
19-56-0 POWER STEERING GEAR PISTON								
19-56-6	RING, Piston	6-8	59	59	59	59	1	1822 672
	"O" RING, Piston Ring	6-8	59	59	59	59	1	1822 671
19-56-83	SPRING, Pressure Control Valve Lower	6-8	59	59	59	59	1	1822 442
19-56-90	"O" RING, Pressure Control Valve	6-8	59	59	59	59	1	1536 268
19-57-0 POWER STEERING GEAR VALVES								
19-57-2	PISTON and SPRING PACKAGE	6-8	59	59	59	59	1	*1879 509
19-57-3	VALVE	6-8	59	59	59	59	1	1944 004
19-57-13	"O" RING, Valve Housing	6-8	59	59	59	59	1	1733 612
19-57-63	LEVER, Valve	6-8	59	59	59	59	1	1822 380
19-57-64	SPRING, Valve Lever	6-8	59	59	59	59	1	1822 383

★ Indicates use as required.

Numerals in parentheses () refer to notes.

Printed in U.S.A.

⊠ Indicates parts not listed in any previous parts book.

Prices and specifications subject to change without notice.

* Indicates change or addition.

